



# Parent Information Book

103 Dorie School Road  
R D 11

Rakaia 7781

P: 03 302 0862

F: 03 302 0845

E: [office@dorie.school.nz](mailto:office@dorie.school.nz)

W: [www.dorie.school.nz](http://www.dorie.school.nz)



# Contents:

Welcome

Our Vision and Pride Values

History of Dorie School

Our School

Our People

Staff

Board of Trustees

Dorie School Support Group

General Information

Enrolling Your Child

Bus Transport

Parents Contribution

Assemblies

Complaints/Concerns

Health and Safety

Lost Property

Music Tuition

Pre Schoolers

School Donation

School Office

Stationery

Technology

Weekly Banking

School Times

Reporting to Parents

Accidents/Illness

Behaviour Management

E.O.T.C

Homework

Music Festival

Newsletters

Religious Instruction

School Lunches

Swimming

Support Systems

Uniform

Our Community

Dorie Community Preschool

Rakaia Medical Centre

Dorie Charitable Trust

Use of School Facilities

School Services available to the Community

Community Newsletter

Our Contact Details



# Welcome

On behalf of the staff, students and the Dorie School Community, I wish to welcome you and your family to Dorie School and trust that your time with us will be a happy and productive experience.

We are a friendly, family orientated school catering for the needs of students in Years 1 – 8.

At Dorie School we strive to develop students who are:

- Life long learners
- Confident creative thinkers, problem solvers and effective communicators
- Respectful of themselves, others and the environment
- Connected to their community and contribute in meaningful ways



We look forward to working positively with you and your child on their educational pathway.

Our “open door” policy means that we welcome your input, feedback and support. The teachers and I are always available to discuss any issues you may have. Please feel free to drop in for a coffee and a chat.

Kind regards

Anthony Dorreen  
Principal



# Our Motto, Vision and Pride Values

At Dorie School our motto is “Pathways to Excellence”. We believe that all children are able to achieve success and excellence. We recognise that as individuals, children will learn in different ways at different rates and have different interests.

Our vision is

**Resilient excited learners achieving beyond their personal belief.**

It is important to teach our children to have resilience and to be able to meet challenges “head on”. Our vision is all about growing students who are self-motivated learners, able to push their personal, physical and academic boundaries in order to achieve at levels they didn’t realise they could reach.

In order to develop students who will aspire to such excellence, we promote our DORIE Values as being important guiding principles. Teachers will refer to and link our DORIE values into all aspects of school life.

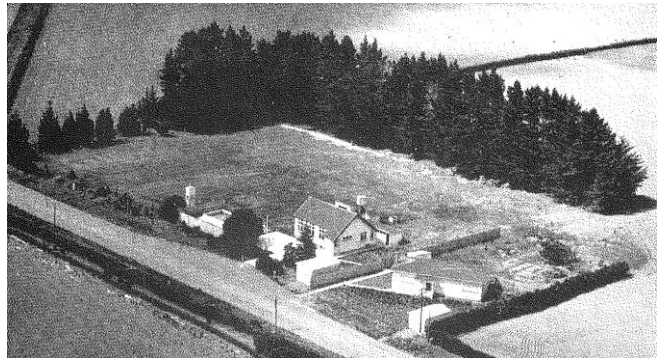
The certificates we give out at school assemblies reflect the importance of our DORIE values.





# Our School

Dorie School was established in 1888 on land donated by Mr John McLean, a pioneer of the local district. Dorie School is situated near the mouth of the Rakaia River, 35km from Ashburton and 70km from Christchurch.



The name “Dorie” comes from the district in Scotland in which Mr McLean originated – “Dorie Nam Fuaram”. Literally translated this means “Grove of the Spring”.

The Maori name for Dorie is “Tahu a Tao” meaning to spear the fish in the river or sea and eat it on the banks”. Maori people, fleeing from the fall of the Onawe Pa on Banks Peninsula, stopped at Dorie on their way south.



Today, Dorie School is a full primary school catering for the educational needs of students in Years 1 – 8. At Dorie you will find 4 brand new classrooms, a well-stocked library, a resource/learning centre and storerooms. We also have a great adventure playground, two tennis courts and a swimming pool. There is an extensive open playing field. The facilities at Dorie are modern, well resourced and maintained.



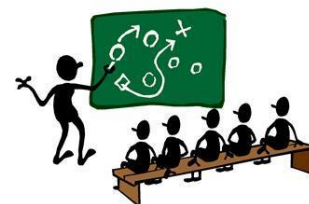


# Our People

## Staff

Mr Anthony Dorreen	Principal
Mrs Nicola Annan	New Entrant/ Year 1 Teacher
Miss Rose Jessep	Year 2-3 Teacher
Mrs Alexandra Krivanek	Year 4-5 Teacher
Mrs Annette Barns	Year 6-8 Teacher, Deputy Principal
Ms Leigh Collinge	Office Administration
Mrs Sarndra Vanderweg	Office Administration
Mrs Vickie Watson	Teacher Aide
Ms Leigh Collinge	Teacher Aide
Mrs Amy Koorey	Teacher Aide
Mrs Cindy Gleave	Teacher Aide
Ms Hannah Stratford	Teacher Aide
Mrs Pricille Benner	Cleaning Contractor

The teachers at Dorie are a dedicated team of professionals. We have an “open door” policy, welcoming parents and caregivers in to school to see what we do.



## Board of Trustees (BOT)

Mrs Sarah Mckimmie	Chairperson
Mrs Anna Peters	Secretary
Mr George Bedford	Property
Mrs Anita Renes	Treasurer
Mrs Jennifer Parkes	Parent Rep
Mrs Narelle Hillhorst	Parent Rep
Mr Anthony Dorreen	Health and Safety
Mrs Annette Barns	Staff Representative

## Dorie School Support Group (DSSG)

We are fortunate to have a group of dedicated parents who run our Support Group. Much like the PTA Committees of old, the role of this group is to welcome and support families, involve parents in the school and support the staff and BOT in various capacities. The DSSG is open to all parents of the school. They meet regularly at various venues to discuss/organise social functions for the parents of the school, fund raise for the “extras” that the teachers may require, and generally have fun! All families are encouraged to support the DSSG and belong to it. We certainly need your help to maintain the wonderful family atmosphere we have at Dorie School.

The key people on the DSSG are Amy Koorey and Narelle Hilhorst.

